

## Zilla Stainless Steel L-Foot Tensile Test Report

To Whom It May Concern:

### **Subject: Zilla Stainless Steel L-Foot Tensile Test**

Per our request, Accurate Metal Testing, Inc. performed tensile testing on the Zilla Stainless Steel L-Foot, Item #ZLF-2.00x2.5 SS-A. Tensile tests included Lateral (Perpendicular to Beam), Lateral (Parallel to Beam), and Vertical (Uplift). The Zilla L-Foot was fastened to the testing equipment using 3/8"-16 serrated flange lock nuts. Testing occurred in general accordance with industry-standard testing procedures on October 21, 2019.

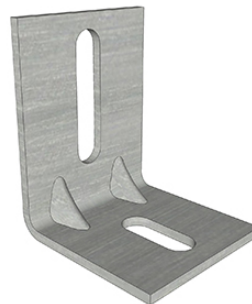
### **Product Specifications**

Description: Zilla L-Foot Stainless

Item #: ZLF-2.00x2.5 SS-A

Size: 2" x 2" x 2.5"

Material: 10 Gauge 304 Stainless Steel



### **Test Equipment**

Tests conducted on a Tinius Olsen Universal Tensile/Compression Machine with a maximum force of 200k lbf calibrated on 05/14/2019.

# Zilla Stainless Steel L-Foot Tensile Test Report

## Tensile Test Configurations and Results

Lab #1910-18

<b>Lateral</b> (Perpendicular to Beam)	
Test 1	6,274 lbf
Test 2	5,710 lbf
Test 3	5,952 lbf
Average	5,978 lbf



<b>Lateral</b> (Parallel to Beam)	
Test 1	6,992 lbf
Test 2	6,922 lbf
Test 3	6,391 lbf
Average	6,768 lbf



<b>Vertical</b> (Uplift)	
Test 1	5,857 lbf
Test 2	5,951 lbf
Test 3	5,821 lbf
Average	5,876 lbf

