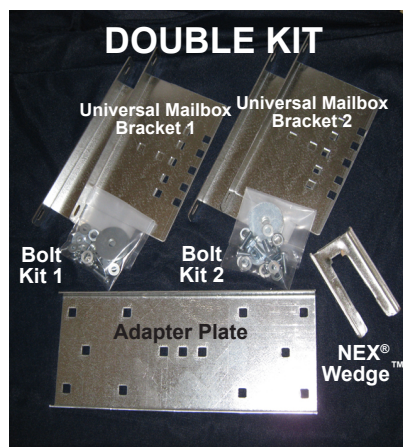
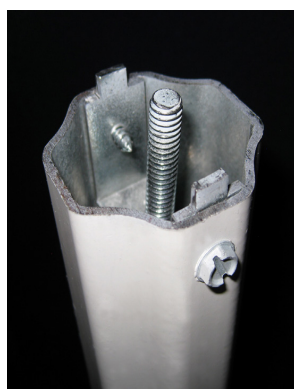


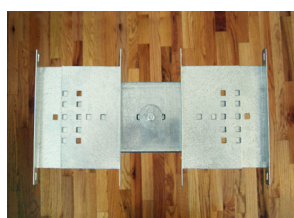
NEX® Double Mailbox Support System



Qty	Item
1	2" 14ga NEX Post 48"
1	2 1/4" 12ga SQ Anchor 30"
1	NEX® Wedge™
2	Universal Mailbox Brackets
1	5/16" Fender washer
1	5/16"-18 Nylock nut
1	Adapter Plate
4	5/16" hardware sets
8	#10 hardware sets



NEX® Post - end view



Mailbox brackets on post



Post secured in anchor with wedge



Double Mailbox Support System installed

To assemble the double mailbox, follow these steps:

1. Install the Anchor flush with the ground, or no more than two (2") inches above the ground (see Anchor Installation Instructions).
2. Assemble the Adapter Plate on NEX® Post using the Fender washers and Nylock nut.
3. Assemble each Universal Mailbox Bracket, flange side up, on the Adapter Plate as far apart as possible using the 5/16" hardware sets. Wider mailboxes may require different spacing. Measure the mailbox and choose the appropriate holes on each bracket to match.
4. Secure each mailbox to the bracket using four #10 hardware sets with the screw heads on the outside and nuts underneath.
5. Insert NEX® Post into the anchor so it is 42" from the ground to the bottom of the mailboxes. Place the Wedge between the post and anchor on the side of the post parallel and away from traffic. Use a hammer to secure it until it is well seated.

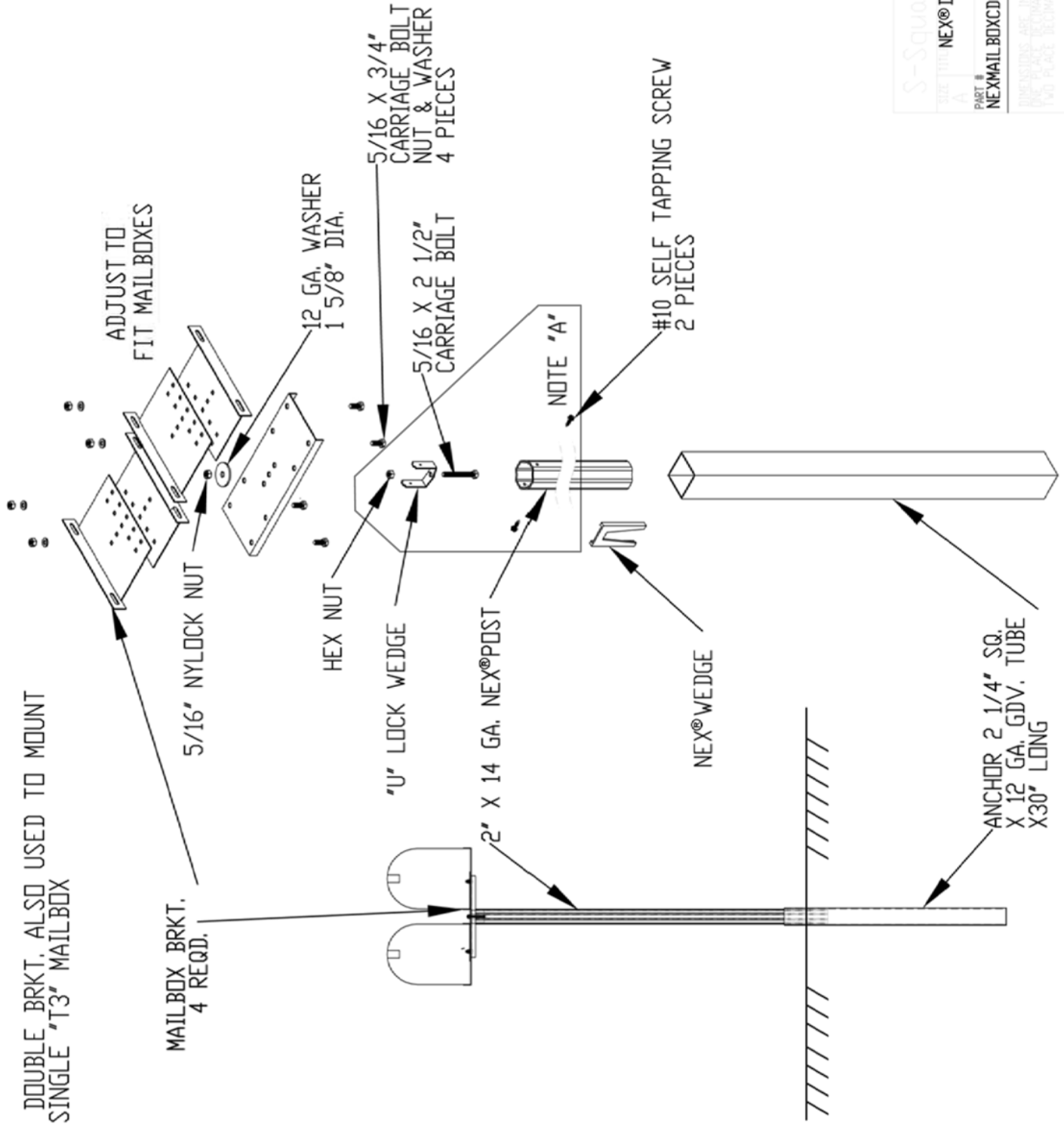
NEX® is protected by Canadian Patent #'s 2,369,517; 2,310,486 of S-Square Tube Products, Inc.

303.286.7051 • www.s-squaretube.com

S-SQUARE
TUBE PRODUCTS®
Manufacturer of NEX®
v 033018

NOTE "A" THIS HARDWARE IS FACTORY INSTALLED

NOTE "B" DOUBLE BRKT. ALSO USED TO MOUNT
SINGLE "T3" MAILBOX



S-Square Tube Products		NEX® DOUBLE MAILBOX SUPPORT, STD. ANCHOR	
REV. A		PART # NEXMAILBOXCDGWSA	
DIMENSIONS ARE IN INCHES TOL. PLACE DECIMAL 2.00		DATE	08/29/2009
SCALE	1" = 1'	DRAWING	SHEET 1 OF 1

Anchor Installation



To begin the installation process, place the Drive Cap* in the opening of the anchor.



Using a power driver or sledge hammer, drive the anchor into the ground.



When the anchor is flush with the ground, or no more than two (2") inches above the ground, remove the Drive Cap*.



Place the NEX® Tube into the anchor approximately six (6") inches.



Insert the NEX® Wedge™ between the anchor and the NEX® mailbox support. Use a hammer to secure it until it is well seated.



You have successfully and easily installed the next generation of sign post - NEX®.

NEX® Wedge™ Removal



The NEX® Wedge™ can easily be removed by using a Slide Hammer*. Simply place the hook of the Slide Hammer* in the slot of the Wedge and hammer upwards.



Once the Wedge is loosened, remove the Wedge and lift the NEX® Post out of the Anchor. Your NEX® Sign Post is removed with little effort and time. Without the Slide Hammer* it is virtually impossible to remove - making it tamper resistant.



Drive Cap*



Slide Hammer*

*suggested, but not required. Sold separately

NEX®

Manufacturer of NEX® Sign & Mailbox Support Products

*NEX® is protected by Canadian Patent #'s 2,369,517; 2,310,486 of S-Square Tube Products, Inc.

2275 W. Midway Blvd., Unit C
Broomfield CO · 80020

Tel. 303.286.7051 · www.s-squartube.com