


# Zilla® Rails

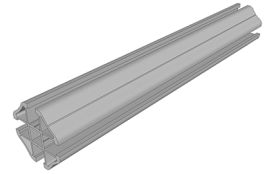
## Technical Specifications



### Zilla® Rac 2.0


US D617,174 | Canadian 133,976

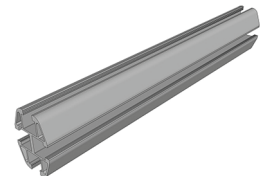
Product	Product No.	Description	Material	Size	Weight	Color
	ZR20--MF	For average weight loads and a wide variety of applications.	6061 T6 or 6005 T5 Aluminum	2" x 2"	1.066 lbs./ft.	Silver
	ZR20--BLK					Black



### Zilla® Quad Combo


Patent Pending

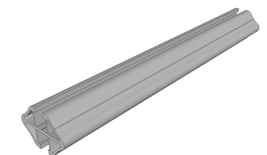
Product	Product No.	Description	Material	Size	Weight	Color
	ZRQ--MF	Strong, lightweight and versatile. Ideal for flush mount installations.	6061 T6 or 6005 T5 Aluminum	1-3/8" x 2"	0.750 lbs./ft.	Silver
	ZRQ--BLK					Black



### Zilla® Dual Grip


US D639,143 | Canadian 137,479

Product	Product No.	Description	Material	Size	Weight	Color
	ZDG--MF	Designed to hold light loads just like the Grip, however pieces can be attached on both sides of it to expand the opportunities. Well suited for flush mount applications.	6061 T6 or 6005 T5 Aluminum	2" x 1-3/8"	0.623 lbs./ft.	Silver
	ZDG--BLK					Black



### Zilla® Grip

US D636,656 | Canadian 138,077 | European 001153548-0002

Product	Product No.	Description	Material	Size	Weight	Color
	ZG--MF	For lighter loads.	6061 T6 or 6005 T5 Aluminum	2" x 3/4"	0.400 lbs/ft	Silver
	ZG--BLK					Black



Continued on next page >

Zilla® So Simple It's Scary<sup>SM</sup>

77 Waneka Pkwy • Lafayette • CO 80026 • 720.880.6700 • fax 303.655.0379 • zillarac.com

 MADE IN USA  MADE WITH RECYCLED MATERIAL © 2013 Zilla Corporation. All rights reserved.

v091813


# Zilla® Rails

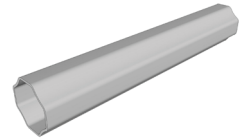
## Technical Specifications Continued



### NEX® 2" 12ga


Patent US D415,847

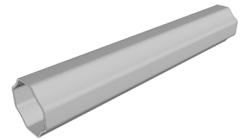
Product	Product No.	Description	Material	Size	Weight	Color
	N20-12G-GS	For heavy loads and larger spans.	A787 Steel	2" x 2"	2.250 lbs./ft.	Silver
	N20-12G-GSBLK					Black



### NEX® 2" 14ga

Patent US D415,847

Product	Product No.	Description	Material	Size	Weight	Color
	NAL20-14G	For larger loads and triangle mounts.	6061 T6 OR 6005 T5 Aluminum	2" x 2"	0.602 lbs./ft.	Silver
	NAL20-14GBLK					Black
	N20-14G-GS		A787 Steel	2" x 2"	1.890 lbs./ft.	Silver
	N20-14G-GSBLK					Black



Continued on next page >

Zilla® So Simple It's Scary<sup>SM</sup>








77 Waneka Pkwy • Lafayette • CO 80026 • 720.880.6700 • fax 303.655.0379 • zillarac.com

 MADE IN USA  MADE WITH RECYCLED MATERIAL © 2013 Zilla Corporation. All rights reserved.

v091813



### Section Properties for the Full Line of Zilla® Rails

	Product	Depth (in)	Area (in <sup>2</sup> )	Weight (plf)	I <sub>x</sub> (in <sup>4</sup> )	I <sub>y</sub> (in <sup>4</sup> )	Z <sub>x</sub> (in <sup>3</sup> )	Z <sub>y</sub> (in <sup>3</sup> )	r <sub>x</sub> (in)	r <sub>y</sub> (in)
	2.0	2	0.911	1.066	0.279	0.279	–	–	0.554	0.554
	Quad Combo	2	0.645	0.750	0.221	0.110	–	–	0.585	0.413
	Dual Grip	1.4	0.532	0.623	0.074	0.149	–	–	0.373	0.529
	Grip	0.71	0.342	0.400	0.019	0.099	–	–	0.236	0.537
	NEX2	2	0.514	0.602	0.237	0.237	–	–	0.678	0.678
	NEX2 14ga (Steel)	2	0.515	1.890	0.237	0.237	0.3136	0.3136	0.678	0.678
	NEX2 12ga (Steel)	2	0.646	2.250	0.290	0.290	0.3884	0.3884	0.670	0.670

### Material Properties of 6005-T5 & 6061-T6

Temper strength of 6005-T5 and 6061-T6 both have a minimum tensile strength of 38,000 psi (262 MPa), a minimum yield strength of 35,000 psi (241 MPa) and a minimum elongation of 8%.