



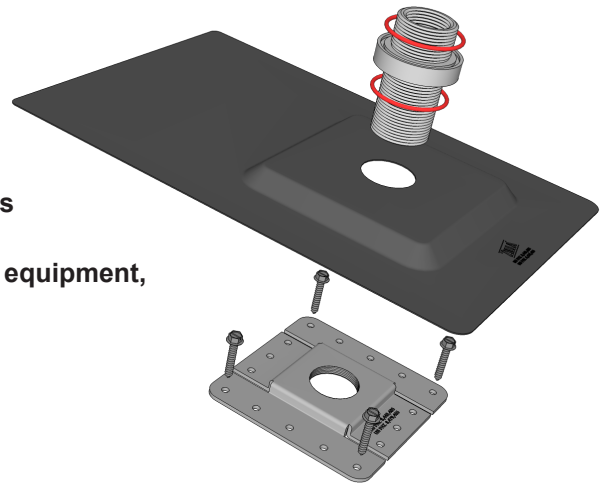
# Zilla® Electrical XL Flashing

## Overview

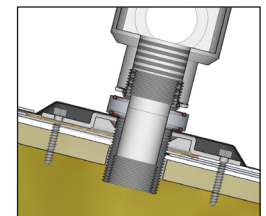
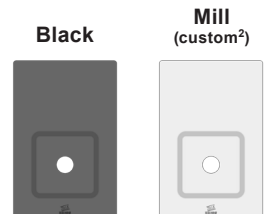
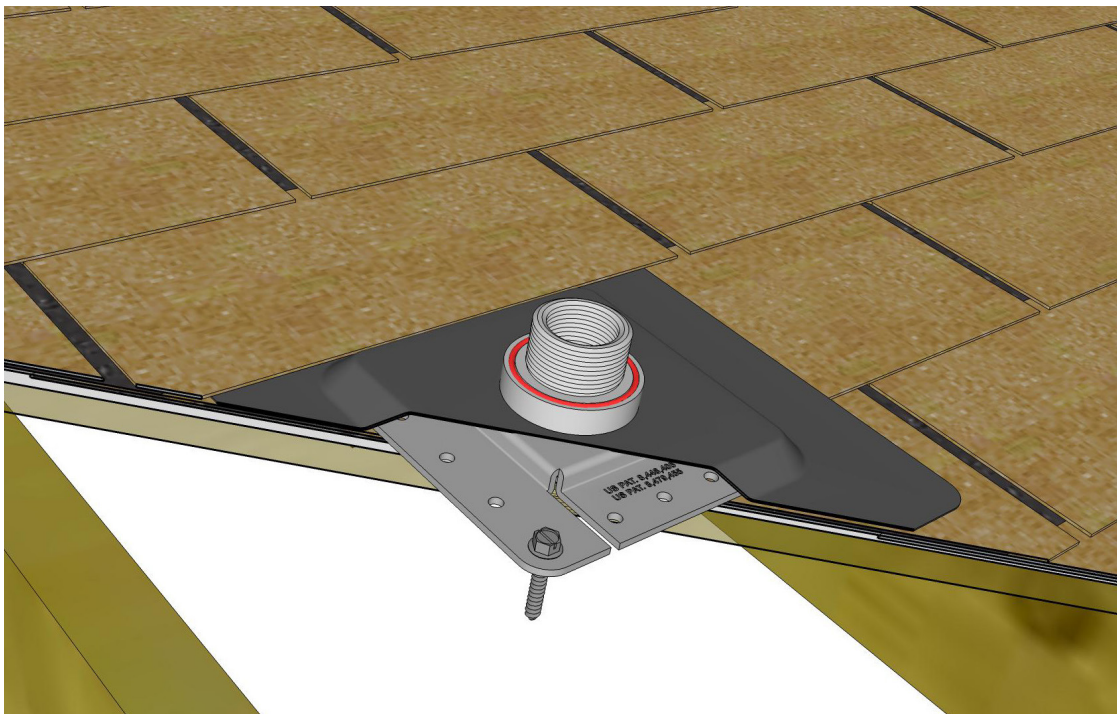
One or more patents apply to this product including without limitation:  
US Pat. 8,479,455; 8,448,405; 8,707,654; 8,689,517; 8,707,655; and/or 8,752,338.  
ZEFLSH-AAL XL / ZEFLSH-AAL BLK XL

**Zilla® Electrical XL Flashing Assembly is unlike any Flashing on the market. No more ugly, leaky rubber boots! Quick, simple, secure: the Zilla® Electrical XL Flashing Assembly eliminates leaking.**

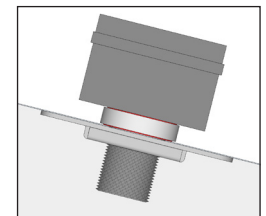
- Run Electrical through the roof or walls without leaks!
- No leaky rubber boots or UV damage
- Mounts flush to the roof or vertical wall
- Zilla® Flashing Adapter seals to Flashing
- Threads directly to a 1-1/4" Conduit Body<sup>1</sup>
- Mount Junction / Combiner Boxes<sup>1</sup> securely without leaks
- Compatible with standard fittings and grounding components
- Ideal for use with shingles or siding
- Other applications: satellite dish cables, weather monitoring equipment, ham radio wiring, ethernet cabling, etc.
- Available for metal roofs



### Zilla® Electrical XL Flashing Isometric section



Asphalt Shingle



Metal Roof

<sup>1</sup> Conduit Body and Junction Box not included.

<sup>2</sup> Flashing available in Mill and custom colors, call for details and availability, minimum orders may apply.

**Zilla® So Simple It's Scary<sup>SM</sup>**

77 Waneka Pkwy • Lafayette, CO 80026 • 720.880.6700 • fax 303.664.1268 • [zillarac.com](http://zillarac.com)

MADE IN USA MADE WITH RECYCLED MATERIAL © 2016 Zilla Corporation. All rights reserved.