



Zilla® Electrical XL Flashing

Installation Instructions

One or more patents apply to this product including without limitation:
US Pat. 8,479,455; 8,448,405; 8,707,654; 8,689,517; 8,707,655; and/or 8,752,338.
ZEFLSH-AAL XL / ZEFLSH-AAL BLK XL

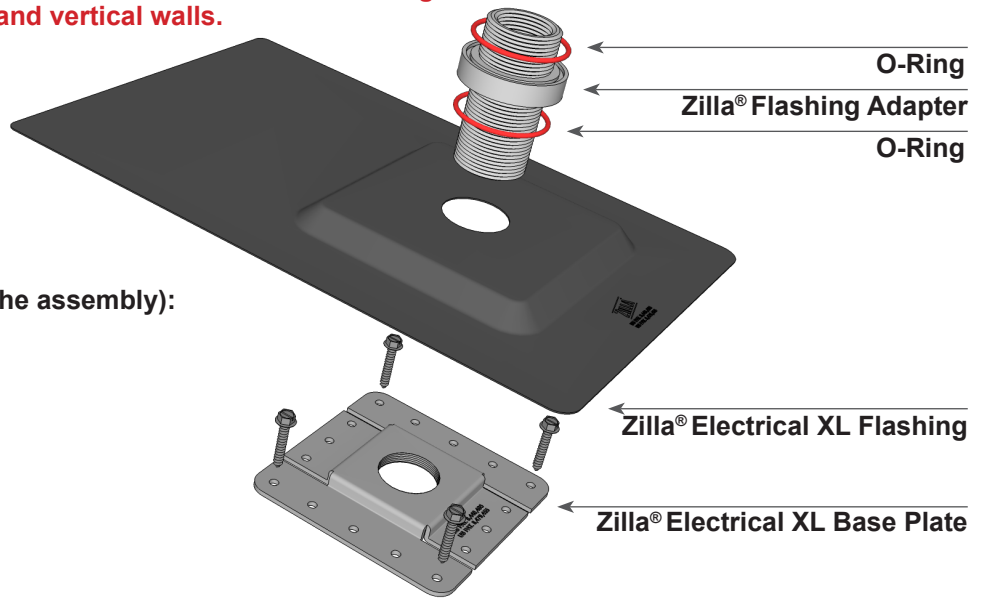
Use the following instructions to install the Zilla® Electrical XL Flashing Assembly on asphalt shingled roofs and vertical walls.

Parts included in the assembly:

- Zilla® Electrical XL Base Plate
- Zilla® Electrical XL Flashing
- Zilla® Flashing Adapter with 2 O-Rings
- 4 - 1/4" x 1-1/2" Lags

Parts & Tools needed (in addition to the assembly):

- Drill/Driver
- Ø 1-3/4" hole saw
- 3/8" socket



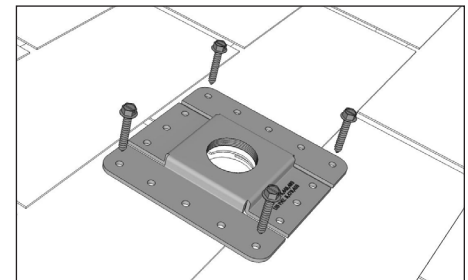
Installation Steps

1 Attach Base Plate

Choose the general area on the roof where you wish to create a hole.



Measure ~3-1/4" down from the edge of the upper shingle where you wish to drill and create a center mark for your hole. Make sure there are no joists or bracing directly beneath where you plan to create your hole. Drill a through hole using a Ø 1-3/4" hole saw.



Place the Base Plate face down on the shingles with the raised feature facing up. Align the center hole of the Base Plate over the hole in the roof. Rotate the Base Plate so it's square and level with the shingles.

Use a 3/8" socket head bit to drive the 4 included lags into the Base Plate to secure it to the roof sheathing.

Continued on next page

Zilla® So Simple It's ScarySM

77 Waneka Pkwy • Lafayette, CO 80026 • 720.880.6700 • fax 303.664.1268 • zillarac.com

MADE IN USA MADE WITH RECYCLED MATERIAL © 2016 Zilla Corporation. All rights reserved.

v082216



Zilla® Electrical XL Flashing

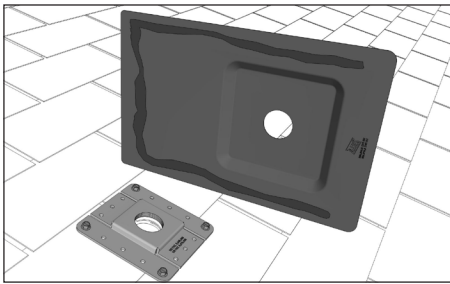
Installation Instructions Continued

One or more patents apply to this product including without limitation:
US Pat. 8,479,455; 8,448,405; 8,707,654; 8,689,517; 8,707,655; and/or 8,752,338.
ZEFLSH-AAL XL / ZEFLSH-AAL BLK XL

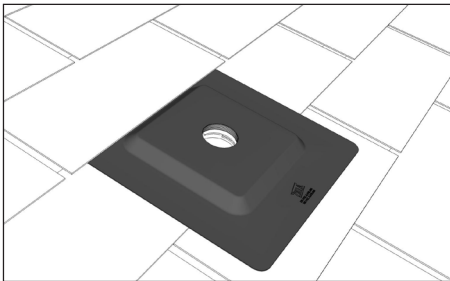
Installation Steps

2 Attach the Flashing

Slide the longest end of the Flashing beneath the shingles directly above the Base Plate.



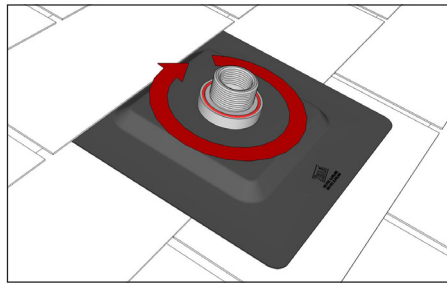
Optional: On the underside of the Flashing, apply a bead of caulk to the top and both sides of the Flashing prior to installation for added protection. Do not caulk the lower sloped edge of the Flashing.



Keep the angle of the Flashing parallel with the roof so you don't disrupt the shingles or existing materials. Align the hole in the Flashing with the hole in the Base Plate.

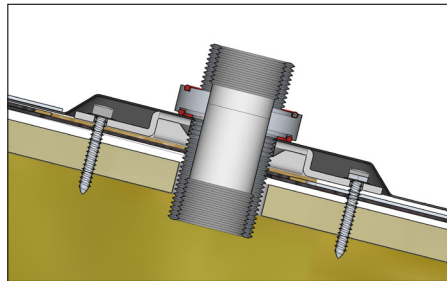
3 Mount the Flashing Adapter

Thread the longer end of the Adapter through the Flashing and into the Base Plate. Thread until the O-Ring is fully seated against the Flashing.



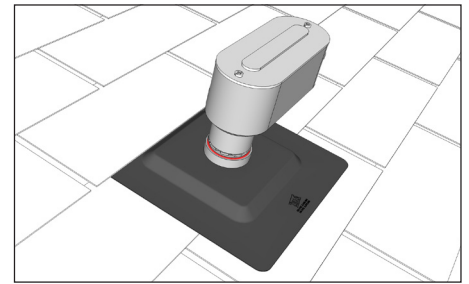
NOTE: Once the Flashing is in firm contact with the Base Plate and O-ring, turn the Adapter 1/4 turn to tighten.

DO NOT OVERTIGHTEN the Adapter.



4 Complete the Installation

Attach components such as a Conduit Body or Junction Box as necessary.



Note: when using a Combiner Box, insert the second O-Ring between the Adapter and body of the box to create a water tight seal.

Disclaimer

The installer is fully responsible for getting the system verified and approved for all local and state building codes and all Authorities Having Jurisdiction AHJ. Zilla Corporation assumes no liability whether assumed or implied.

Zilla® So Simple It's ScarySM

77 Waneka Pkwy • Lafayette, CO 80026 • 720.880.6700 • fax 303.664.1268 • zillarac.com

MADE IN USA MADE WITH RECYCLED MATERIAL © 2016 Zilla Corporation. All rights reserved.

v082216